



Key Stage 4 GCSE Prospectus

2021-2023



Contents

Letter from the Principal	3
Key Options Dates	4
GCSE - An Introduction	5- 6
The Key Stage 4 Curriculum	7- 8
Compulsory GCSE Examination Subjects	9
Heads of Department	10
English Language and English Literature	11– 13
Mathematics Pathways	14- 16
Science Pathways	17- 21
Optional GCSE Examination Subjects	22
Arabic	23
Art and Design	24
Business Studies	25
Computer Science	26
Design and Technology	27
Drama	28- 29
Economics	30
French	31- 32
Geography	33
History	34
Information and Communication Technology	35
Music	36
Physical Education	37- 38
Psychology	39
Spanish	40- 41
Jumeirah College Options Form - copy for reference	42
Jumeirah College GCSE Results 20120	43

January 2021

Dear Parents and Students

In September, current Year 9 students will start two-year courses which will lead to GCSE qualifications. This booklet is designed to give guidance to both students and parents about the choices that are required to be made.

Students receive information and guidance through the pastoral forum. In addition to this they have the opportunity to request an individual consultation with our Careers Advisor, Mrs Lynn Willmoth.

Parents are warmly invited to view a Careers and Options Evening link on **Sunday, 31 January 2021**. More information about this virtual event will be released closer to the time. The deadline to submit options follows this evening on **Wednesday, 10 February 2021**, in order for option blocks and timetables to be built.

Details about all compulsory courses as well as further information about optional courses are contained within this document accessible on the College website.

Meanwhile, if you have any queries or require further information please contact either Mr Kesterton, the Vice-Principal, or Miss Nicola Deans, Head of Year 9.

Yours sincerely,



Mr M Morris
Principal



Year 9 GCSE Options/Careers Evening

Sunday 31 January 2021

A video link will be made available which will explain the options process to students and parents, alongside advice on selection of options.

18:00-18:20

Virtual Options presentation by Mr Kesterton and heads of core subjects



Mr Kesterton
(Academic Vice Principal)

Heads of Arabic, English, Mathematics and Science will also present



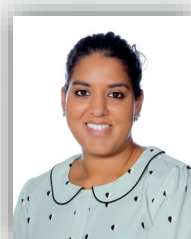
Mrs Roushdy
Head of Arabic



Miss Trotman
Head of English



Mr Tank
Head of Mathematics



Ms Johal
Head of Science

18:20 onwards

Virtual presentations by departments for subject-specific information

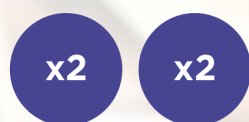
Mrs Lynn Willmoth, Careers Advisor, will also be contactable at l.willmoth@gemsedu.com if you would like to make a formal appointment.



Mrs Willmoth

An Introduction to GCSE

- GCSE is the acronym for the General Certificate of Secondary Education.
- We use examination boards based in the UK: AQA, Pearson (Edexcel), Cambridge and CCEA.
- GCSEs are designed to examine all ability ranges with grades ranging from 9 to 1 (9 being the highest level of attainment) for current GCSEs, with the previous scoring system of A*-G still being used in some iGCSEs.
- Students at Jumeirah College typically study between 9 and 10 GCSEs.
- 5 GCSEs at grades 9-4 are often used as a benchmark of reasonable attainment for students of average ability, with many expecting English Language and Mathematics to be included. We set aspirational and realistic targets with our students which, alongside the quality of provision, ensure that the vast majority achieve well in excess of average attainment.
- GCSEs are undertaken over the two years of Key Stage 4, i.e. Years 10 and 11.
- Many GCSE courses have an element of coursework known as Controlled Assessment which is prepared in class and at home but completed under examination conditions in College. Tasks are marked by our teachers then externally moderated by the examination board. All controlled assessments must be completed before examinations are undertaken.
- Examinations will take place at the end of the two years of study in the final term of Year 11. This is according to regulations issued by the UK Government. Further information can be found at: <https://www.gov.uk/government/organisations/ofqual>
- The English Baccalaureate is not a separate qualification, but is available for students whose options meet the below criteria. The aim of the EBacc is to ensure students gain a range of worthwhile subjects, skills and experiences. It is achieved by attaining at least grade 4s at GCSE in English Language, Mathematics, Sciences (including Computing), a humanity (either history or geography) and a modern foreign language (including Arabic). We encourage students to ensure that their option choices allow them to qualify for the English Baccalaureate, although we have not made qualification for the EBacc compulsory.



English* Maths

Double weighted



EBacc qualifications x3

sciences, computer science, history, geography and languages



Other x3

Further GCSE qualifications or any other DfE approved non-GCSE qualification

*Higher score of English Language and English Literature used if student has taken both.
The lower score can be used in the other category.

- To qualify for entry to the Jumeirah College Sixth Form at the current time, a minimum of four GCSEs at grade 6 (B) and two GCSEs at grade 5 or 4 (C) are required, including English Language as a first language and Mathematics. Although some subjects have a higher entry requirement, the minimum entry requirements for specific subjects is usually a grade 6 (B grade) at GCSE. More detailed information is to be found in the Sixth Form prospectus available as an eBook on the College Website.

An Introduction to GCSE

Changes to assessment:

Key structural features of the new GCSEs confirmed by Ofqual include:

- A new grading scale that uses the numbers 1–9 to identify levels of performance (with 9 being the top level - attained by the top 5% of the global GCSE cohort in a subject). Where performance is below the minimum required to pass a GCSE, students will be awarded a U for Ungraded.
- GCSEs are now linear, with assessment to be taken at the end of the course in June. Re-sit opportunities will only generally be available in November for English Language and Maths.
- Assessment by external exam only, except where non-exam assessment is the only way to provide valid assessment of the skills required. Maths, English Literature and English Language to be externally assessed. English Language has a Speaking assessment that will be reported separately.

We offer some iGCSEs which retain the letter grades. This means that for now students will be awarded a mixture of the old style letter grades (A*-G) and numerical awards (9-1), depending on their subject choices. There will be an increased focus on students qualifying in a broad range of disciplines (EBacc) to allow for increased diversity of choice at A Level and higher education.

New grading structure	Current grading structure
9	A*
8	
7	
6	B
5	
4	
3	C
2	
1	
U	U

GOOD PASS (DfE)

5 and above = top of C and above

AWARDING

4 and above = bottom of C and above

KHDA/MOE Requirements:

We are also required to deliver Ministry subjects up to the end of Year 10. These include:

- **Social Studies and Moral Education**, taught via a 40-minute tutor time session per week in afternoon registrations. These are not externally assessed and do not provide access to a qualification.
- **Arabic as a second language**: this is a new expectation from 2021. We have made room for the three required periods of study in the timetable without impacting students' options. A small number of high attaining students will be able to access the GCSE in the subject at the end of Year 10.
- **Arabic as a first language**: this has always been compulsory for students registered on an Arabic passport. This year for the first time we are able to offer Arabic A without using one of the students' 4 options choices.
- **Islamic Education**: again a compulsory subject for students registered as Muslim. Students study 2 lessons per week of the Ministry Islamic.

The Key Stage 4 Curriculum

Compulsory Subjects

All students study the following subjects:

- GCSEs in English Language and English Literature
- GCSE Mathematics (one of 2 pathways)
- GCSE Science (one of 2 pathways: Combined or Triple. Triple replaces an option)
- Physical Education (PE)
- National Studies: comprising Social Studies and Moral Education
- Islamic Education (for Muslim Students)
- Arabic passport holders study Ministry Arabic
- All students study Ministry Arabic up to the end of Year 10

During the core PE lesson per week, students participate in a number of activities, ranging from competitive sports to those promoting and developing health and fitness.

Pastoral sessions with form tutors, in afternoon registration, support the overall development of students. Topics covered include careers education and work related learning, health education, study skills and target setting. Social Studies and Moral Education are compulsory for Year 10 students and cover the Ministry Curriculum.

Muslim students attend two lessons of Islamic Education per week following the Ministry of Education curriculum.

Optional Subjects

Students are required to select four subjects that they would like to study and a reserve choice. Option blocks will be created around the choices selected by internal candidates wherever possible. Students are asked to identify a reserve choice as, inevitably, there will be a small minority of students whose first choices will not be possible due to blocking constraints. Therefore it is important that reserve choices are chosen wisely.

In choosing subjects to study at GCSE, students should think carefully about the following points:

- What do I enjoy?
- What am I good at?
- What do I require for future A level choices and beyond?
- Do I have a balance of subjects that demonstrate a wide skill set?
- Do my subjects qualify for the *EBacc?
- Have I made the most informed decision that I can?
- How successful have previous cohorts been in this subject?
- Does the specification look engaging?
- Which subjects have a track record of success? (Last year's results are included at the end of this prospectus to evidence the most recent performance).

*The English Baccalaureate (EBacc) is a performance measure showing the proportion of children in a secondary school who achieve a Grade 4 (C) or more in core academic subjects - English, maths, a science, history or geography and a language.

Coursework/Controlled Assessment

Coursework has been phased out or reduced in many subjects with the introduction of the new GCSEs. However, this currently remains an important element of some GCSE courses and can contribute to the total assessment. Although the amount of coursework varies from subject to subject, all of it requires students to work independently over a period of time. It is essential that students manage their time effectively from the start of their GCSE courses to avoid a build-up of coursework deadlines. The level of teacher support and feedback permissible by the examination boards can vary between subjects. Key dates will be issued to enable students to meet crucial deadlines efficiently and for parents to monitor the completion and submission of work. This means that students complete their work under supervision at times directed by the College over the two years of the course.

GCSE Examination Fees and Payment

The College is an independent examination centre for the British examination boards that provide GCSE and A-level courses outside the United Kingdom (Pearson (Edexcel), AQA, Cambridge and CCEA). Due to examination board regulations, examinations run from Monday to Friday and have to follow UK timings, without exception. Further details regarding the timings and cost of these examinations will be provided as soon as the information becomes available, normally in Dec-Jan of Year 11. Examinations are charged separately. We do not yet have the information from the Examination Boards on charges for courses concluding in 2023, but it is expected to be approximately AED500 per subject for most subjects. There may, however, be further charges for some subjects where a moderator is required, or extraordinary invigilation procedures are necessary. Full and up-to-date information on exam fees are available in the JC Exam Fee Booklet available via the college Communicator or website. These fees are charged by the examination boards, not Jumeirah College.

Careers and Options Advice

If you wish to make an appointment to speak with Mrs L Willmoth, our Careers Advisor, please email her directly on l.willmoth_jcd@gemsedu.com

Work in tutor sessions develop the potential to make informed decisions, as does discussion with subject teachers, Heads of Department, tutors, Miss Deans, family and friends. The KUDOS online careers programme provides a wide range of suggestions and viewpoints to support making options that are right for the individual and their future.

Useful Websites, Further Reading

www.aqa.org.uk	AQA Examination Board
http://qualifications.pearson.com/en/home.html	Edexcel Examination Board
https://www.cambridgeinternational.org/programmes-and-qualifications/cambridge-upper-secondary/cambridge-igcse/	Cambridge Examination Board
www.ucas.com	UK University Applications and Courses Guide
www.jumeirahcollegecareers.weebly.com Password: careers4me	Jumeirah College Careers Website
https://www.myworldofwork.co.uk/choosing-my-subjects-0	Choosing Subjects
https://www.careerpilot.org.uk/information/your-choices-at-14	Choosing Subjects
www.careerswales.com	Careers Website

Further information is available in the Careers section of the College Library or the College Careers website: <http://jumeirahcollegecareers.weebly.com>

Compulsory Key Stage 4 Examination Subject Information

Key Stage 4 English

English Language
English Literature

Key Stage 4 Mathematics Pathways

Mathematics (Year 11): majority of students

Mathematics (Year 10) Further Mathematics (Year 11): accelerated sets

Key Stage 4 Science Pathways

Combined Science 2 GCSE qualifications

Triple Science - (takes up an option) 3 GCSE qualifications

Biology
Chemistry
Physics

Compulsory Subjects (Examined)	Optional Subjects (All students choose 4 subjects)
English Literature English Language Mathematics Sciences Ministry Arabic A (Arabic passport holders) Ministry Arabic B (all non-Arab students, up to the end of Year 10)	GCSE Arabic Art Business Studies Computer Science Design Technology Drama Economics French Geography History ICT Music GCSE Physical Education Psychology Spanish Triple Science
Compulsory Subjects (Not Examined)	
Islamic Education (Muslims) Physical Education (Core) Social Studies (in tutor times) Moral Education (in tutor times)	

Heads of Department



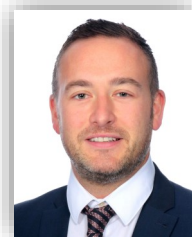
Mrs Roushdy
Arabic & Islamic



Miss Jackson
Art



Mr De Garis
Business Studies &
Technology



Mr Graham Parkin
Design & Technology



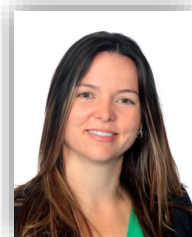
Mr R Burke
Drama



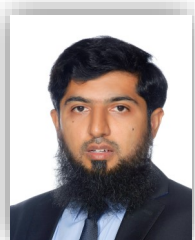
Miss Trotman
English



Mrs White
Geography



Mrs Storey
History



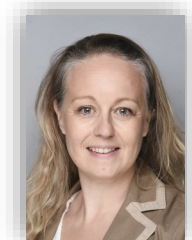
Mr Munshi
Information &
Communication
Technology



Mr Tank
Mathematics



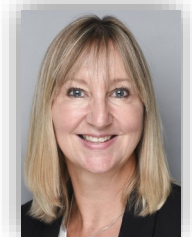
Ms Temple-Smith
Modern Foreign
Languages



Ms Wetherell
Music



Ms Davies
Physical Education



Ms Johnson
Psychology & Sociology



Miss Johal
Science



Ms Dawson
Inclusion

Key Stage 4 English

Students study the new AQA GCSEs for both Language and Literature. These specifications have been written in response to the recent changes brought in by the UK Government. Students will no longer submit any coursework and there is an increased emphasis on the technical accuracy of students' writing.

All students will study both Language and Literature in their four English lessons per week. They will receive two GCSE qualifications.

English Language

Head of Department:
Examination Board and Specification Code:

Miss K Trotman
AQA English Language (Code: 8700)

Why study English Language?

English Language is the study of oral and written communication. It teaches broad based literacy skills using a wide range of sources to allow students to develop their ability to read for meaning, infer, deduce, communicate with clarity, creativity, coherence and flair both in speech and in writing. English Language is well known as a subject that links to all other areas of the curriculum, so good grades will help to move students on to any AS/A2 Level as the skills are integral to any further higher level study.

What is involved?

The analysis of how writers create meaning in literary and non-literary genres such as autobiographies and newspapers, the study of how language is used to shape readers' understanding of the world and how we interpret it. The composition of written texts for analytical, discursive, creative and descriptive purposes. The study of English Language will develop students' ability to:

- Demonstrate skills in speaking, listening, reading and writing necessary to communicate with others confidently, effectively, precisely and appropriately
- Express themselves creatively and imaginatively
- Understand the patterns, structures and conventions of written and spoken English
- Select and adapt speech and writing to different situations and audiences
- Become critical readers of a range of texts, including multi-modal texts
- Use reading to gain access to knowledge and to develop their own skills as writers
- Connect ideas, themes and issues, drawing on a range of texts.

How will I be assessed?

There is no coursework element in this new GCSE.

There are two exams, taken at the end of the course in Year 11.

Paper 1: Explorations in Creative Reading and Writing 50%:

Students will be given one literary fiction text

Students will be given a series of short and long answer questions on this text, relating to the subject matter, the writer's views and methods

Students will also be asked to write either a descriptive or narrative piece of writing, often in response to a visual stimulus

Paper 2: Writers' Viewpoints and Perspectives 50%:

Students will be given two texts, one Literary Non-Fiction and one Non-Fiction

Students will be given a series of short and long answer questions, one of which will ask them to compare the two given texts

Students will also be asked to write, presenting a viewpoint on a given subject

Speaking and Listening:

This component will be examined separately.

Students will be awarded a separate grade for an individual presentation.

English Literature

Head of Department:
Examination Board and Specification Code:

Miss K Trotman
AQA English Literature (Code: 8702)

Why study English Literature?

This specification offers the freedom of choice in approaches to teaching and learning, flexibility in choice of texts and tasks whilst providing a rigorous summative assessment of candidates' skills and abilities.

What is involved?

The specification is based on substantial study of at least three complete texts in depth, with breadth of study across a range of modern and heritage literature. This course has a skills-based approach to the assessment of responses to literature, rewarding freshness and individuality. This specification complements the AQA GCSE in English Language specification and each develops and builds upon the skills utilised within the other.

This course will enable students to:

- Understand that texts from the English, Welsh and Irish literary heritage have been influential and significant over time and explore the meaning of these today.
- Become critical readers of fiction, prose, poetry and drama
- Experience different times, cultures, viewpoints and situations as found in literary texts
- Connect ideas, themes and issues, drawing on a range of texts
- Use reading to gain access to knowledge and to develop their own skills as writers

How will I be assessed?

All exams are closed book. Students will not take copies of the texts into the exam.

Paper 1: Shakespeare and the 19th Century Novel 40%:

Students will answer one question on the Shakespeare text and one question on the 19th Century novel that they have studied. Teachers will choose texts appropriate for their classes.

Paper 2: Modern Texts and Poetry 60%:

Students will answer one question on the modern text that they have studied and one question on two poems from an anthology of poetry.

Students will also answer a question that asks them to compare two unseen poems.

Key Stage 4 Mathematics Pathways

Students will be offered two different pathways within Mathematics at GCSE. There are four lessons on the timetable per week devoted to Mathematics. The appropriate pathway is selected for each student, depending on their own individual progress and achievement in previous years.

Students who successfully completed the course in the Express groups in Year 8 by achieving a secure Level 8 will follow Pathway A in Key Stage 4, and will already have completed the first year of the GCSE course by the end of Key Stage 3. This involves the completion of GCSE Mathematics in the summer of Year 10 and GCSE Further Mathematics in the summer of Year 11. This is a more challenging GCSE qualification which prepares them for both A Level Mathematics and Further Mathematics. Therefore they will gain two mathematically based GCSEs overall.

All other students will follow Pathway B, completing GCSE Mathematics only over Years 10 and 11, sitting the examination in the summer of Year 11. This route does not in any way preclude pupils from studying either A Level Mathematics or Further Mathematics.

Students in set 1 and 2 will sit the Higher Tier papers, aiming to achieve a grade 6 to 9. Students in set 3 are likely to sit the Foundation Tier papers, aiming to achieve a grade 4 or 5.

Mathematics

Head of Department:

Mr P Tank

Examination Board and Specification Code: **EDEXCEL Mathematics (9-1) (Code:1MA1)**

What is involved?

The Edexcel GCSE in Mathematics qualification requires students to:

Develop knowledge, skills and understanding of mathematical methods and concepts, including:

- Number
- Algebra
- Ratio, proportion and rates of change
- Geometry and Measures
- Probability
- Statistics

Use knowledge, skills and understanding to make connections between mathematical concepts

Apply the functional elements of Mathematics in everyday and real-life situations

The course also gives students the opportunity to develop the ability to:

- Acquire and use problem-solving strategies
- Select and apply mathematical techniques and methods in every day and real world situations
- Reason mathematically, make deductions and inferences and draw conclusions
- Interpret and communicate mathematical information in a variety of forms appropriate to the information and context

How will I be assessed?

- Three written papers at the end of the course: one non-calculator paper and two calculator papers, each contributing a third to the final grade
- Foundation (grades 1-5) and Higher (grades 4-9) Tier papers available
- Each paper is 1 hour 30 minutes
- 80 marks on each paper

Further Mathematics

Head of Department:

Mr P Tank

Examination Board and Specification Code:

CCEA GCSE Further Mathematics (Code: 2337)

What is involved?

The Further Mathematics course is intended to cater for those students who require a knowledge of Mathematics beyond GCSE Higher Tier Mathematics and who are capable of working beyond the limits of the GCSE Mathematics course.

The Further Mathematics course is designed to broaden the experience of students whose mathematical ability is significantly above average and who will follow mathematical courses at A Level and beyond.

Pure Mathematics: (50% of the course)

- Addition, subtraction, multiplication and division of rational algebraic fractions with linear denominators
- Formation and solution of equations
- Matrices - addition, subtraction and multiplication
- Laws of logarithms
- Sine, cosine and tangent for angles of any magnitude
- Solving trigonometric equations
- Differentiation
- Curve sketching
- Integration

Mechanics: (25% of the course)

- Concept of a vector
- Force as a vector and units of force
- Concept of friction
- Equilibrium of a particle
- Moments and the principle of moments
- Displacement/time and velocity/time graphs
- Constant acceleration formulae
- Application of Newton's laws of motion

Statistics: (25% of the course)

- Population, sample, discrete variables, continuous variables
- Measures of central tendency
- Measures of dispersion
- Use of Venn diagrams
- Time series and moving averages
- Bivariate analysis
- Spearman's rank correlation coefficient
- Binomial and Normal distributions

How will I be assessed?

Assessment is through 3 written papers; Paper 1 covers Pure Mathematics and is worth 50% of the final grade, Paper 2 covers Mechanics and is worth 25% of the final grade, and Paper 3 covers Statistics and is also worth 25% of the final grade. The course still awards letter grades A* - G.

Key Stage 4 Science - Combined

Key Stage 4 Science - Combined Science

Due to a major overhaul of the GCSE Science Specification we will now offer the Combined Science Course as our primary qualification. This comprises of 6 lessons per week, two in each of the three science disciplines. The revised specification is much more rigorous and will therefore prepare students for further study in science more effectively than previous qualifications did.

Students taking the Combined Science Qualification will achieve two GCSE grades. These are obtained by sitting 6 exams at the end of Year 11 with each exam lasting for 1hr and 15mins each.

Triple Science:

The Triple Science Qualification will be offered as an option to students who meet the entry requirement of a Level 7B at the end of Key Stage 3. Eligibility will be communicated to these individuals through Progress Reports as the year progresses. Students opting for Triple Science will have 9 lessons a week, three in each discipline. This will require students to sacrifice one of their four options to complete. They will therefore select Triple Science as one of the four options, when completing the GCSE Options Form.

Combined Science

Head of Department:
Examination Board and Specification Code:

Miss S Johal
AQA GCSE Combined Science Trilogy
(Code: 8464)

What is involved?

This new course is the predominant pathway through GCSE and will offer a very rigorous and comprehensive two years of scientific study. It will also prepare students well for A-Level studies in any one of the Science disciplines.

Students on the combined course will receive 2 GCSE grades for Science.

Biology:

- What are animals and plants built from?
- How do dissolved substances get into and out of cells?
- How do plants obtain the food they need to live and grow?
- What happens to energy and biomass at each stage in a food chain?
- What happens to the waste material produced by plants and animals?
- What are enzymes and what are some of their functions?
- How do our bodies keep internal conditions constant?
- Which human characteristics show a simple pattern of inheritance?

Chemistry:

- How do sub-atomic particles help us to understand the structure of substances?
- How does structure influence the properties and uses of substances?
- How much can we make and how much do we need to use?
- How can we control the rates of chemical reactions?
- Do chemical reactions always release energy?
- How can we use ions in solutions?

Physics:

- How can we describe the way things move?
- How do we make things speed up or slow down?
- What happens to the movement energy when things speed up or slow down? What is momentum?
- What is static electricity? How can it be used and what is the connection between static electricity and electric currents?
- What does the current through an electrical circuit depend on?
- What is mains electricity and how can it be used safely?

How will I be assessed?

Students will sit 6 exams at the end of Year 11. There will be two Biology, two Chemistry and two Physics exams, each lasting 1 hour and 15 minutes. There is no coursework component to this GCSE and therefore the final two grades achieved will be taken from the performance across all 6 papers.

Biology

Head of Subject:
Examination Board and Specification Code:

Ms K Wing
AQA GCSE Biology (Code: 8461)

Why study Biology?

Biology GCSE counts as a 'separate science' at GCSE and provides a firm foundation for studying the subject at A-level. It will be taken with both GCSE Chemistry and Physics.

Students opting for the Triple course will receive 3 GCSEs, one in each Science.

What is involved?

- 1 Cell Structure and Transport
- 2 Cell Division
- 3 Organisation and the Digestive System
- 4 Organising Animals and Plants
- 5 Communicable Disease
- 6 Preventing and Treating Disease
- 7 Non-communicable Disease
- 8 Photosynthesis
- 9 Respiration
- 10 The Human Nervous System
- 11 Hormonal Coordination
- 12 Homeostasis in Action
- 13 Variation and Evolution
- 14 Genetics and Evolution
- 15 Adaptations
- 16 Biodiversity and Ecosystems

Throughout the two years, students will complete a series of required practical experiments which are designed to improve problem solving, observation, analysis and interpretation of data. Students will record all experiments formally in the style of traditional lab reports at the request of higher educational institutions.

How will I be assessed?

Students will complete 2 exams at the end of Year 11, each one lasting for 1 hour and 45 minutes. There is no coursework attached to the GCSE, meaning all marks come from these two exams.

Chemistry

Head of Subject:
Examination Board and Specification Code:

Mr A Khan
AQA GCSE Chemistry (Code: 8462)

Why study Chemistry?

Chemistry GCSE counts as a 'separate science' at GCSE and provides a firm foundation for studying the subject at A level. It will be taken with both GCSE Biology and Physics.

Students opting for the Triple course will receive 3 GCSEs, one in each Science.

What is involved?

- 1 Atomic Structure
- 2 The Periodic Table
- 3 Structure and Bonding
- 4 Chemical Equations
- 5 Chemical Changes
- 6 Electrolysis
- 7 Energy Changes
- 8 Rates and Equilibrium
- 9 Crude Oil and Fuels
- 10 Organic Reactions
- 11 Polymers
- 12 Chemical Analysis
- 13 The Earth's Atmosphere
- 14 The Earth's Resources
- 15 Using our Resources

Throughout the two years, students will complete a series of required practical experiments which are designed to improve problem solving, observation, analysis and interpretation of data. Students will record all experiments formally in the style of traditional lab reports at the request of higher educational institutions.

How will I be assessed?

Students will complete 2 exams at the end of Year 11, each one lasting for 1 hour and 45 minutes. There is no coursework attached to the GCSE, meaning all marks come from these two exams.

Physics

Head of Subject:
Examination Board and Specification Code:

Mr D Hagar
AQA GCSE Physics (Code: 8463)

Why Study Physics?

Physics GCSE counts as a 'separate science' at GCSE and provides a firm foundation for studying the subject at AS level. It will be taken with both GCSE Biology and Chemistry.

Students opting for the Triple course will receive 3 GCSEs, one in each Science.

What is involved?

- 1 Conservation and Dissipation of Energy
- 2 Energy Transfer by Heating
- 3 Energy Resources
- 4 Electric Circuits
- 5 Electricity in the Home
- 6 Molecules and Matter
- 7 Radioactivity
- 8 Forces in Balance
- 9 Motion
- 10 Force and Motion
- 11 Force and Pressure
- 12 Wave Properties
- 13 Electromagnetic Waves
- 14 Light
- 15 Electromagnetism
- 16 Space

Throughout the two years, students will complete a series of required practical experiments which are designed to improve problem solving, observation, analysis and interpretation of data. Students will record all experiments formally in the style of traditional lab reports at the request of higher educational institutions.

How will I be assessed?

Students will complete 2 exams at the end of Year 11, each one lasting for 1 hour and 45 minutes. There is no coursework attached to the GCSE, meaning all marks come from these two exams.

Optional GCSE Examination Subjects

Arabic

Art and Design

Business Studies

Computer Science

Design and Technology (DT)

Drama

Economics

French

Geography

History

Information and Communication Technology (ICT)

Music

Physical Education (PE)

Psychology

Spanish

Triple Science

GCSE Arabic

Head of Department:
Examination Board and Specification Code:
Foundation level and Higher level available

Mrs A Roushdy
Edexcel GCSE Arabic (9-1) (Code:1AA0)

Why study Arabic?

- Learn many skills which are useful in a wide range of careers, such as the ability to communicate clearly, be confident about speaking in public, use problem solving strategies and write coherently.
- The subject has been developed to help students of all abilities progress and develop a passion for language.
- Add an international dimension to your choice of GCSE subjects, which is something many employers and higher education providers look for in an employee.
- Have greater opportunities to work and/or study abroad, or work for companies in the UK with international links.
- Discuss your interests, ideas and opinions with other people who speak Arabic.
- The assessments are accessible to all students and provide a real world focus.

What will I learn?

GCSE Arabic helps you explore a wide range of topics, from celebrations and festivals, through getting by as a tourist in Arabic-speaking countries to international campaigns and events. You will learn about Arabic culture through a range of interesting topics which will add to your understanding of the language and country.

Term 1	Identity and culture
Term 2	Local area, holiday and travel
Term 3	School
Term 4	Future aspirations, study and work; International and global dimension
Term 5	International and global dimension; Revision
Term 6	Revision

How will I be assessed?

Four exams are taken, worth 25% each. You can choose between foundation or higher level Arabic and will be given a final grade between 1 and 9, with 9 being the highest.

Listening and understanding in Arabic 50 marks

This requires you to listen to recordings in Arabic and answer questions on what you hear. Some of these questions will be multiple-choice and some will require you to write short answers in English and Arabic.

Reading and understanding in Arabic 50 marks

You will be asked questions from a piece of Arabic text. Some of these questions, will be multiple-choice and some will require you to write short answers in English and Arabic. Texts will be from various Arabic sources such as emails, magazines and books. You will also be required to translate sentences or a short passage from Arabic into English out loud.

Writing in Arabic 60 marks

The foundation paper requires you to write a passage about a photo/picture. Two topics will be provided, you will make a choice between these and write a short and long passage of text on the chosen topic. Four topic choices are provided in the higher paper, on which you will write longer passages.

At both levels there is also a translation exercise, from English into Arabic.

Speaking in Arabic 70 marks

In this part of the exam you will do a short role play with the examiner and talk about a photo/picture. You will also talk about two of the topics you have studied.

Art and Design

Head of Department
Examination Board and Specification Code:

Miss S Jackson
EDEXCEL Art & Design (9-1) (Code: 1AD0)

Why study Art and Design?

GCSE Art and Design is about having an adventurous and enquiring approach to art and design and enjoying the process of developing the skills to communicate your ideas. There is an emphasis on building the exploration of your ideas in a sketch book and developing a very personal response to set briefs. The skills developed during this course will clearly feed into 'A level' and build your confidence with visual communication. You may wish to do a GCSE in Art and Design for its own sake, perhaps to form the basis of a future interest or you might wish to pursue a career where it is useful to have had experience of art, craft and design or where you will be required to use some of the skills developed during this course.

Possible careers in Art:

Architecture Interior design Graphic design Fashion Advertising Fine artist	Web design Illustrator Product design Animator Art therapist Teacher	Theatre design Carpenter Museum technician Gallery director Craftsperson
--	---	--

What is involved?

Year 10

Students will explore the theme of "Natural World" through a variety of different workshop-based lessons. These will include experimenting with media and techniques such as drawing, painting, print making, photography and graphics.

Students can then refine their selected choice of media as they enter year 11 and begin their personal project.

The course also includes written elements such as annotation and analytical skills.

How will I be assessed?

Year 10 - Unit 1 - Personal project 60%

Students will produce a portfolio of work demonstrating an independent approach to a chosen theme.

Year 11 - Unit 2 - Externally set assignment 40%

A theme will be set by the exam board and will culminate in a 10 hour exam piece over two days. Homework will be set weekly to support student progress and is expected to take at least 30 minutes per week.

Throughout the course, students will also get the opportunity to attend a number of galleries and workshops.

Your teacher will guide you with your choices which will develop your strengths and those skills which you find more challenging. This coursework is marked internally at the College and is then moderated by the examination board.

Click the video [link](#) to see more information about Art at JC:

Business Studies

Head of Department:

Examination Board and Specification Code:

Mr N De Garis

AQA Business Studies (Code: 8132)

Why study Business Studies?

Students will study the relationship between business activity and the changing environment within which it takes place, the structure, organisation and control of the main forms of business and business management in a competitive environment.

Business Studies is linked to Economics, where topics overlap in some areas so they can therefore form a good course combination. Business Studies combines well with a range of social sciences, humanities and mathematics to lead to university subjects in such areas as business, economics, law and accountancy.

Although it is important to stress that Business Studies GCSE is not essential for further study in Business Studies or a career in business it is an extremely useful foundation in the skills needed in the business world. Looking to the future you can start a career in business armed with an excellent knowledge of how businesses operate. In particular you will have a head start in careers within accountancy, marketing and human resources.

What is involved?

The main course topics are:

- Businesses in the real world
- Influences on business
- Business operations
- Human resources
- Marketing
- Finance

How will I be assessed?

Two written papers:

Paper 1:

Influences of operations and HRM on business activity - 1 hour 45 (50% of total marks)

Paper 2:

Influences of marketing and finance on business activity - 1 hour 45 (50% of total marks)

Computer Science

Head of Department:
Examination Board and Specification Code:

Mr I Munshi
Cambridge IGCSE (Code:0478)

Aims and learning outcomes:

The IGCSE specification in Computer Science encourages students to be inspired, moved and challenged by following a coherent, satisfying and worthwhile course of study. It helps learners to gain an insight into related sectors. It prepares the students to make informed decisions about further learning opportunities and career choices.

Through the study of Computer Science students will be able to develop computational thinking skills, problem solving and develop skills in a high level programming language. Computer Science is about delving deeper into the fundamentals of Computers, both from a hardware and software perspective. In a world increasingly reliant on apps and automated systems, it is imperative that students learn about algorithms and software, allowing students to be more than users and to instead become creators of these systems.

Difference between Computer Science and ICT:

Computer Science is quite different from Information and Communication Technology (ICT). ICT is about the **use** of computers and their **applications**. Computer Science is about their **design, implementation** and **understanding** of how computers operates.

To use the analogy of a car, **ICT** is the equivalent of teaching a person how to drive a car, and how to navigate it and use the controls.

Computer Science is the equivalent of teaching automotive engineering: how the clutch works, how to design new cars, and how to maintain existing ones. Computing is more than just programming.

Computer Science is a demanding but rewarding course. It is best suited to students who have enjoyed the Computer Science and Programming aspects of the KS3 curriculum. It is also suited to students who are willing to challenge themselves or want to learn programming and how the insides of a computer operate. It will test the students problem solving and critical thinking skills at a high level. In return, the students will gain a broad set of skills which can be transferred to many types of courses including further study in medicine, maths and engineering.

How will it be assessed?

Paper 1 Computer Systems (*Examination 50% of the qualification*)

This unit covers the body of knowledge about computer systems on which the examination will be based. This examination will assess understanding of the theory content of the specification with a mixture of short, medium and longer answer questions. The theory component covers modern technologies such as block chain, artificial intelligence and robotics.

Paper 2 Algorithm, Programming and Logic (*Examination 50% of the qualification*)

This unit covers the body of knowledge about programming concepts, problem solving skills and databases. The questions will assess the theoretical application of programming and algorithms.

Full specification and further information can be found at the link below:

www.cie.org.uk/0478

Design and Technology

Head of Department:
Examination Board and Specification Code:

Mr G Parkin
AQA Design & Technology (Code: 8552)

Why study Design and Technology?

Students must have an interest/passion in designing and making things. This course encourages extensive use of designing, testing, planning, materials, prototyping, CAD/CAM, analysis, evaluation and graphic communication to present a design solution for a given situation or problem.

All design-related career choices will benefit from having a GCSE in Design and Technology because of the opportunity to explore, share and analyse ideas to a sophisticated level. Employers and universities alike view Design and Technology as invaluable in terms of exposing students to a problem-solving approach in design which is an essential skill for any serious designer.

This subject can lead into A level Product Design, a very useful qualification to access many degree courses including design, engineering and material science. Indeed many students at Jumeirah College who have studied A level Product Design are now currently studying interior design, graphic product innovation, mechanical, chemical, electrical, civil and sports engineering, architecture, product design and materials' science to name but a few.

What is involved?

Year 10 will include a variety of small projects which encourage an innovative approach and embed the essential skills for designing and making. Year 11 will consist of one major project (NEA) which will be assessed through a design and make portfolio, the context of this project will be available in June of Year 10.

Students will focus on core technical principles, specialist technical principles in one material area and the principles in designing and making throughout the course which will prepare them for the examination in Year 11.

How will I be assessed?

Paper 1: 2 hour written paper worth 50% (100 marks):

The written paper is split into three sections where all questions must be answered.

Content:

- Section A - Core technical principles
- Section B - Specialist technical principles
- Section C - Designing and making principles

NEA: Non-examined assessment worth 50%, approximately 35 hours (100 marks):

Students produce a substantial portfolio of evidence along with a prototype based on a contextual challenge set by the exam board. Students will use an iterative design process covering the following assessment criteria:

- Identifying and investigating design possibilities
- Producing a design brief and specification
- Generating design ideas
- Developing design ideas
- Realising design ideas
- Analysing & evaluating



Drama

Head of Department:
Examination Board and Specification Code:

Mr R Burke
IGCSE Cambridge Code 0994

Why study Drama?

IGCSE Drama is the perfect subject for you if you have a very good command of English and want to deepen your understanding of drama performance with theory. You should have an interest in gaining a greater understanding of how theatre and plays work, and a creative instinct for communicating your views through both practical exploration and written reflection. If you are considering a career in the performing arts industries, studying drama at this level will provide you with an excellent level of experience in performance skills. However, the IGCSE Drama qualification will give you a superb grounding in far more than just acting. Successful Drama students go on to read subjects such as law, English, history, journalism, business studies and psychology at university. A wide range of careers from teaching to management, business to politics all rely on the core elements of presentation, leadership, creativity and decision-making that are intrinsic to the Drama course.

What is involved?

The course combines practical, creative and analytical skills in equal measure. You will learn the skills for independently developing your own drama for performance. You will also be required to write about your drama; developing your ability to justify your choices and opinions. The course involves studying practitioners and plays in detail. The IGCSE Drama course will give you the opportunity to study play texts, theatrical practitioners and dramatic theory, whilst utilising them within a performance context.

How will I be assessed?

The IGCSE Drama course consists of 2 components (1 internally assessed and 1 externally examined). The course is 60% practically based, with 40% final written examination.

Component 1: Written examination 2 hours 30 minutes (40% of the qualification) 80 marks:

- **Practical exploration of one set text (extract)**
- **Devised analysis from a given stimulus.**

Assessment overview:

Candidates answer:

- All questions in Section A **30 marks**
- Two questions in Section B (one compulsory question and one question from a choice of two) **25 marks**
- Both questions in Section C. **25 marks**

Externally assessed

Component 2: Performance Coursework 120 marks (60% of the qualification)

Assessment overview:

Candidates submit three pieces of practical work:

- Individual performance based on an extract from a play
- Group performance based on an extract from a play
- Group performance based on an original devised piece.

Internally assessed and externally moderated

Drama - continued

Assessment overview:

Externally assessed by visiting examiner.

Component 3: Theatre Makers in Practice

- **Written examination: 1 hour and 30 minutes (40% of the qualification) 60 marks:**

- Practical exploration and study of one complete performance text
- Live theatre evaluation – free choice of production

Assessment Overview:

Section A:

Bringing Texts to Life (45 marks),

This section consists of one question broken into five parts (short and extended responses) based on an unseen extract from the chosen performance text.

Section B:

Live Theatre Evaluation (15 marks),

This section consists of two questions requiring students to analyse and evaluate a live theatre performance they have seen.

Economics

Head of Subject
Examination Board and Specification Code:

Mr N De Garis
AQA Economics (Code: 8136)
***Subject to change**

Why study Economics?

Economics GCSE is an essential grounding for further study of Economics at A level and degree level. The skills learned in Economics lend themselves to a wide range of careers including finance, banking, international development and insurance.

What is involved?

This subject looks at economic activity through the lens of consumers, producers, government and the workings of the global economy. As students go through the course they're presented with opportunities to focus on real-world issues. Students will consider and reflect upon moral, ethical and sustainable issues that arise as a result of the impact of economic activity. Students will use their economic knowledge and skills to investigate national and global economic situations and issues from the last 15 years. Students will also be aware of the policies that governments have used to attempt to manage these situations and issues.

Students will develop quantitative skills relevant to the subject content and will be able to make relevant calculations from economic data and be able to interpret data presented in the form of graphs and charts

Students will be expected to question the theories that they learn and appreciate the multiple interpretations of economic events. Students will study the following topics:

How markets work:

- Economic foundations
- Resource allocation
- How prices are determined
- Production, costs, revenue and profit
- Competitive and concentrated markets
- Market failure

How the economy works:

- Introduction to the national economy
- Government objectives
- How the government manages the economy
- International trade and the global economy
- The role of money and financial markets

Students should complement their study of Economics by keeping up to date with current economic issues in the news. It is therefore important for students to read a quality newspaper on a regular basis.

How will I be assessed?

Two written examinations to be taken in June of Year 11:

Paper 1:

How markets work	1 hour 45	50% of marks
------------------	-----------	--------------

Paper 2:

How the economy works	1 hour 45	50% of marks
-----------------------	-----------	--------------

French

Head of Department:
Examination Board and Specification Code

Mrs F Temple-Smith
AQA French (Code: 8658)

Students are encouraged to choose at least one Modern Language at GCSE level.

Why study languages?

French is a very useful language for work and pleasure in later life. The ability to speak and understand a foreign language is an important part of a person's overall education. They might need to travel to another country or communicate with other nationalities in any aspect of work. It is therefore useful for most careers, but especially in the travel and tourism industry, international business, foreign office, finance, technology, journalism and teaching.

GCSE French helps students develop their language skills in a variety of contexts and broadens their understanding of the culture of countries and communities where French is spoken. It encourages enjoyment of language learning and the recognition that language skills enable students to take their place in a multi-lingual global society.

What is involved?

The GCSE course covers three distinct themes as well as related sub-topics. These themes apply to all four skills. Students are expected to understand and provide information and opinions relating to their own experiences and those of other people, including people in countries/communities where French is spoken. Students sit their examinations at the end of the GCSE course in Year 11 in all four skills. Each paper counts for 25% of the overall marks. The main themes studied are:

- Identity and culture
- Local, national, international and global areas of interest
- Current and future study, and employment

Scope of study:

As students progress during their French GCSE, they will learn to:

- Communicate and interact effectively in speech, for a variety of purposes across a range of contexts
- Communicate effectively in writing for a variety of purposes
- Understand and respond to different types of written and spoken language
Understand and use more accurately a wider range of vocabulary and structures, including some unfamiliar language
- Understand issues and opinions; discuss issues and give opinions

How will I be assessed?

GCSE French has a Foundation Tier (grades 1 - 5) and a Higher Tier (grades 4 - 9). Students may be entered for either Foundation Tier or Higher Tier, but they must enter the same tier for all four skills.

French - continued

Paper 1: Listening

25% of GCSE

The test will be pre-recorded using native speakers. Students' comprehension will be tested by a range of question types, normally requiring non-verbal responses or responses in English.

Foundation Tier	35 minutes	40 marks
Higher Tier	40 minutes	50 marks

Paper 2: Speaking

25% of GCSE

Students will carry out one role-playing situation, discuss a stimulus card and take part in general conversation which involves asking and answering questions and exchanging opinions.

Foundation Tier	7 - 9 minutes	60 marks
Higher Tier	10 - 12 minutes	60 marks

Paper 3: Reading

25% of GCSE

Students' comprehension will be tested by a range of question types, normally requiring non-verbal responses or responses in English. Higher tier students will be given material which will include some complex, unfamiliar language in a range of registers together with non-factual and imaginative material including narrative.

Foundation Tier	45 minutes	60 marks
Higher Tier	60 minutes	60 marks

Paper 4 Writing

25% of GCSE

At Foundation level students produce writing tasks which demonstrate their ability to write short texts using simple sentences and familiar language accurately, to convey meaning and exchange information.

At Higher level students write to present facts and express ideas and opinions. They also make accurate use of a variety of vocabulary and grammatical structures, including some more complex forms, to describe and narrate with reference to past, present and future events.

Foundation Tier	60 minutes	50 marks
Higher Tier	1 hour 15 minutes	60 marks

Geography

Head of Department:
Examination Board and Specification Code:

Mrs S White
Edexcel International 9-1 GCSE (4GE1)

Why should I study Geography?

In order to answer this difficult question, ask yourself what you enjoy about the study of Geography. Try these questions. Do I want to:

- Learn more about the world I live in?
- Develop skills that will help me in other areas, such as ICT and research?
- Undertake fieldwork and learn outside of the classroom?
- Work in a team with other students?
- Learn through investigating and doing, not listening and reading?
- Study a subject which is interdisciplinary and will link to your other GCSE choices?

Why should I study IGCSE?

Edexcel IGCSE courses are international in outlook, but retain a local relevance. The syllabuses provide opportunities for contextualised learning and the content has been created to suit a wide variety of schools, avoid cultural bias and develop essential lifelong skills, including creative thinking and problem-solving. Edexcel IGCSE Geography candidates develop skills, including:

- an understanding of the processes which affect physical and human environments
- an understanding of location on a local, regional and global scale
- the ability to use and understand geographical data and information
- an understanding of how communities around the world are affected and constrained by different environments

How will I be assessed?

Assessment	Course Content	Percentage
Paper 1: Physical Geography 70 marks, 1 hour 10 minute examination. The questions are a mixture of multiple-choice, short-answer, data-response and open-ended questions.	<p>Content summary</p> <p>River environments, Coastal environments and Hazardous environments including fieldwork from one of these topics</p> <p>Assessment</p> <p>Section A: Candidates choose two out of three questions on: river environments, coastal environments or hazardous environments.</p> <p>Section B: Candidates choose one out of three fieldwork-related questions on: river environments, coastal environments or hazardous environments.</p>	40%
Paper 2: Human Geography, 105 marks, 1 hour 45 minute examination. The questions are a mixture of multiple-choice, short-answer, data-response and open-ended questions.	<p>Content summary</p> <p>Economic activity and energy, Rural environments, Urban environments including fieldwork from one of these topics in addition to one topic from the following Global issues: Fragile environments and climate change, Globalisation and migration or Development and human welfare</p> <p>Assessment</p> <p>Section A: Candidates choose two out of three questions on: economic activity and energy, rural environments or urban environments.</p> <p>Section B: Candidates choose one out of three fieldwork-related questions on: economic activity and energy, rural environments or urban environments.</p> <p>Section C: Candidates choose one out of three questions on: fragile environments and climate change, globalisation and migration or development and human welfare.</p>	60%

History

Head of Department:
Examination Board and Specification Code:

Mrs K Storey
Edexcel History GCSE (9-1) (Code: 1HI0)

Why study History?

Very few subjects offer such sustained practice of the *Higher Order Thinking Skills*, prized by acclaimed universities and a host of top professions, than History. This GCSE is designed to develop knowledge and critical skills and, unlike previous courses, is not purely content driven. The course offers students with an interest in broader history the unique opportunity to study from the Medieval period, through the Renaissance and Early Modern world right up to the present day. It also provides students with the chance to study the Cold War and Tudor England under the reign of one of history's most iconic and beguiling of monarchs - Elizabeth I. Students will be assessed using a combination of short answers, source analysis questions and some more extended essay-writing tasks.

History is useful for a variety of careers and is especially recommended for students aiming for careers in politics, law, investment banking, information management, human resources management, and journalism. It is a widely respected and highly academic qualification that can help students gain access to a wide variety of post-16 courses and professional careers.

What is involved and how will I be assessed?

Paper 1: Thematic study and historic environment:

- Section A: Medicine in Britain, c.1250 - present day
- Section B: The British sector of the Western Front 1914-18: Injuries, treatment, and the trenches
- Written examination: 1 hour and 15 minutes
30% of the qualification

Paper 2: Period study and British depth study:

- Section A: Superpower relations and the Cold War, c. 1941-91
- Section B: Early Elizabethan England, c. 1558-88
- Written examination: 1 hour and 45 minutes
40% of the qualification

Paper 3: Modern depth study:

- Weimar and Nazi Germany, 1918-39
- Written examination: 1 hour and 20 minutes
30% of the qualification

Information & Communication Technology

Head of Department:
Examination Board and Specification Code:

Mr I Munshi
Cambridge IGCSE (0417)

Why study ICT?

The IGCSE ICT qualification is ideal for anybody who is remotely interested in the field of ICT. It will give a firm grounding in the fundamental concepts of ICT. Career opportunities vary from being a network manager, systems analyst, programmer, database administrator, web designer, software engineer, business analyst to an ICT teacher/lecturer. All students undertaking this particular course need not be naturally gifted at ICT. However, a high degree of commitment and enthusiasm will be required throughout the duration of this course.

What is involved?

This innovative IGCSE course is a hands on and engaging course. It allows students to learn new skills and maintain an interest in this ever-changing and evolving subject. It will build on young people's love of digital devices and explores how technology impacts on every aspect of our daily lives. Students who take this course will understand the benefits of using technology and know how to use ICT safely and responsibly.

Students will study the following topics:

Types and components of computer systems	File management
Input and output devices	Images
Storage devices and media	Layout
Networks and the effects of using them	Styles
The effects of using IT	Proofing
ICT applications	Graphs & Charts
The systems life cycle	Document Production
Safety and security	Databases
Audience	Presentations
Communication	Spreadsheets & Web Authoring

Students will:

- gain knowledge and understanding of Information and Communication Technology
- develop skills to apply knowledge and understanding to produce ICT-based solutions
- develop skills of analysis and evaluation, making reasoned judgements and presenting conclusions.

How will I be assessed?

Paper	Mode of Assessment	Weighting	Time
Paper 1	Written Examination	40%	1 hour 30 mins
Paper 2	Practical Examination	30%	2.hours 15 mins
Paper 3	Practical Examination	30%	2.hours 15 mins

Music

Head of Department:
Examination Board and Specification Code:

Ms S Wetherell
Edexcel GCSE Music (Code: 2MU01)

Why study Music?

Music at GCSE combines performing, composing and appraising. Students are challenged both academically and practically, and there is an expectation to take part in the vibrant extracurricular life of the department. Students should be at grade 4 or equivalent standard on their first instrument or voice before starting the course. As well as academic rigour, music is practically demanding too, requiring students to master either an instrument or their voice to a high standard to achieve top grades.

Music challenges a student's ability to work alongside others to achieve a common goal; life skills are nurtured throughout this course. As a result of these components, universities value Music as a qualification as it demonstrates students' creativity, dedication, commitment and organisation skills. Music GCSE is a highly recognised qualification which is beneficial regardless of the career path you choose to follow.

What is involved?

Students will demonstrate skills in aural perception, musical knowledge and understanding and communication through their analysis of the four areas of study: Instrumental Music 1700 - 1820, Vocal Music, Music for Stage and Screen and Fusions. GCSE Music is split into three components: Performing, Composing and Appraising. The GCSE caters for a wide spectrum of abilities and provides opportunities to use music technology, including Sibelius, Logic Pro X and the College's recording studio.

How will I be assessed?

	Requirements	Mode of Assessment	
Component One: Performing	Students need to perform for at least four minutes' combined duration . Including both: Solo performance & Ensemble performance	Centre assessed, externally moderated	30%
Component Two: Composing	Students compose two compositions , of at least three minutes' combined duration One composition to a brief, of at least one minute in duration. One free composition set by the teacher, of at least one minute in duration.	Centre assessed, externally moderated	30%
Component Three: Appraising	Written paper: 1 hour 45 minutes Section A: Areas of study, dictation, and unfamiliar pieces (68 marks) Section B: Extended response comparison between a set work and one unfamiliar piece (12 marks)	Externally assessed	40%

Physical Education

Head of Department:
Examination Board and Specification Code:

Miss E Davies
Edexcel PE (Code: 1PE0/01)

The GCSE PE FULL COURSE is offered to students who have demonstrated a high level of proficiency and application in PE throughout Key Stage 3 (no short course is available).

Why study Physical Education?

Physical Education is ideal for those people interested in sports and games. It will enable them to gain an examination qualification in an activity which is (40%) practical and that they enjoy. The majority of the final mark (60%) is based on the theory of PE and sport. The theory component enables students to study the body and the reasons that we move as we do. Students will also learn how we can improve our health and fitness in order to improve our sporting performance, and why we participate in certain activities.

What is involved?

GCSE Physical Education students have to be talented, dedicated to hard work and improving their skills, interested in a variety of sports and knowledgeable about the theoretical aspects of physical activity.

- Students must be able to perform at a high level in at least three different sports (one individual activity, one team sport and one other: either individual activity or team game **(30% of qualification)**).
- Students must be able to apply the theory aspects of the course to their practical performances.
- Students will complete a Personal Exercise Plan coursework which combines theoretical and practical knowledge and application **(10% of qualification)**.

How will I be assessed?

Theory - 60% of total grade:

The theory aspects of the course are taught in the classroom and cover the following areas:

Component 1 (36% of qualification):

- Applied anatomy and physiology
- Movement analysis
- Physical training
- Use of data

Component 2 (24% of qualification):

- Health, fitness and well-being
- Sport psychology
- Socio-cultural influences
- Use of data

The theory part of the course is examined with **two written examinations** at the end of Year 11.

Physical Education - continued

Practical - 40% of total grade (30% is practical performance and 10% is coursework):

Students have to choose three different activities (one individual, one team and one other) in which to be examined. These activities will all be assessed during the two year course and moderated in the spring term in Year 11. The coursework is completed in Year 11.

There are various Activity Groups from which activities can be chosen (below). Students **must** select either one team sport and two individual sports **or** two team sports and 1 individual sports.

Individual	Team	Activities that could be used as an individual or team activity
Amateur Boxing	Association Football	Badminton (Singles/Doubles)
Athletics - Track	Basketball	Dance (Solo/Duet/Group)
Athletics - Field	Cricket	Squash (Singles/Doubles)
Canoeing	Handball	Table Tennis (Singles/Doubles)
Track Cycling	Hockey	Tennis (Singles/Doubles)
Road Cycling	Lacrosse	Figure Skating
Diving	Netball	Sailing
Golf	Rowing	Sculling
Equestrian	Rugby League	
Kayaking	Rugby Union	
Rock Climbing	Volleyball	
Sculling	Waterpolo	
Skiing	Acrobatic gymnastics	
Snowboarding	Futsal	
Swimming	Ice Hockey	
Trampolining	Inline/Roller Hockey	
BMX Cycling		
Windsurfing		

In addition, students will complete a Personal Exercise Plan (PEP) which is a written piece of coursework and is worth 10% of the overall grade.

Psychology

Head of Department:
Examination Board and Specification Code:

Ms L Johnson
AQA Full Course Psychology
(Code: 8182)

Why study Psychology?

Psychology is the scientific study of people, the mind and behaviour. It is both a thriving academic discipline and a vital professional practice (The British Psychological Society).

Psychology is particularly relevant to any job that involves working directly with people or any job that requires the use of problem solving skills.

You could become involved in the worlds of clinical, sport, occupational, health, forensic, educational or criminal psychology. Alternatively, a career in education, the Armed Forces, sports management, human resources, medicine, the emergency services, media...any career involving working with people!

Psychology is a remarkably fascinating subject at all levels of study.

For more information: <http://www.aqa.org.uk/subjects/psychology/gcse/psychology-8182>

What is involved?

The study of:

- Memory
- Perception
- Development
- Research Methods
- Social Influence
- Language thought and communication
- Brain and Neuropsychology
- Psychological problems

How will I be assessed?

These topics will be assessed during two 105 minute examinations to be taken in May/June of Year 11. A combination of short answer and extended writing questions make up each examination. Students are expected to know and understand a broad range of research and demonstrate their ability to evaluate both research and psychological theories.

There is no coursework to complete in GCSE Psychology however, small-scale experiments will be conducted throughout the course in order to provide an insight and direct experience of research methods in psychology.

Spanish

Head of Department:
Examination Board and Specification Code

Mrs F Temple-Smith
AQA Spanish (Code: 8698)

Students are encouraged to choose at least one Modern Language at GCSE level.

Why study a Modern Foreign Language?

The ability to speak and understand a foreign language is an important part of a person's overall education, for travelling abroad or communicating with other nationalities in any aspect of work. It is therefore useful for most careers, but especially in the travel and tourism industry, international business, foreign office, finance, technology, journalism and teaching.

Spanish is one of the world's major languages, and it is the official language of most of South and Central America. Wouldn't it be impressive to be able to offer your product or service to the 350 million people whose mother tongue is Spanish? In North America, Hispanic consumers are the fastest-growing market segment. Undoubtedly, if you are bilingual, you will be more marketable and have more career choices than your monolingual counterpart. Globalization, with its accompanying free trade agreements is shrinking the business world, and those who know more than one language will definitely have the edge.

What is involved?

The GCSE course covers three distinct themes as well as related sub-topics. These themes apply to all four skills. Students are expected to understand and provide information and opinions relating to their own experiences and those of other people, including people in countries or communities where Spanish is spoken. Students sit their examinations at the end of the GCSE course in Year 11 in all four skills. Each paper counts for 25% of the overall marks. The main themes studied are:

- Identity and culture
- Local, national, international and global areas of interest
- Current and future study and employment

Scope of study:

As students progress during their Spanish GCSE they will learn how to:

- Communicate and interact effectively in speech for a variety of purposes across a range of contexts
- Communicate effectively in writing for a variety of purposes
- Understand and respond to different types of written and spoken language
- Understand and use more accurately a wider range of vocabulary and structures, including some unfamiliar language

Spanish - continued

How will I be assessed?

GCSE Spanish has a Foundation Tier (grades 1 - 5) and a Higher Tier (grades 4 - 9). Students may be entered for either Foundation Tier or Higher Tier, but they must enter the same tier for all four skills.

Paper 1: Listening **25% of GCSE**

The test will be pre-recorded using native speakers. Students' comprehension will be tested by a range of question types, normally requiring non-verbal responses or responses in English.

Foundation Tier	35 minutes	40 marks
Higher Tier	40 minutes	50 marks

Paper 2: Speaking **25% of GCSE**

Students will carry out one role-playing situation, discuss a stimulus card and take part in general conversation which involves asking and answering questions and exchanging opinions.

Foundation Tier	7-9 minutes	60 marks
Higher Tier	10-12 minutes	60 marks

Paper 3: Reading **25% of GCSE**

Students' comprehension will be tested by a range of question types, normally requiring non-verbal responses or responses in English. Higher tier students will be given material which will include some complex, unfamiliar language in a range of registers together with non-factual and imaginative material including narrative.

Foundation Tier	45 minutes	60 marks
Higher Tier	60 minutes	60 marks

Paper 4 Writing **25% of GCSE**

At Foundation level students produce writing tasks which demonstrate their ability to write short texts using simple sentences and familiar language accurately, to convey meaning and exchange information.

At Higher level students write to present facts and express ideas and opinions. They also make accurate use of a variety of vocabulary and grammatical structures, including some more complex forms, to describe and narrate with reference to past, present and future events.

Foundation Tier	60 minutes	50 marks
Higher Tier	1 hour 15 minutes	60 marks



GCSE Options 2021

Please choose four GCSE subjects from the list below and record in order of preference.

We will discuss your choices with you again if they are not feasible or considered unsuitable.

Name: _____ Form Group: _____

Arabic (Ministry)[#]

GCSE Arabic (Second Language)

Art and Design

Business Studies

Computer Science

Design and Technology

Drama

Economics

French

Geography

History

ICT

Music

Physical Education

Psychology

Spanish

Triple Science*

My GCSE Choices:

1. _____

2. _____

3. _____

4. _____

Reserve:

*Students wishing to take Triple Science will need to use an option to complete the course. Therefore one of the four options above will need to be 'Triple Science'. This is only available to students meeting the Science department threshold for Triple Science.

Please add a reserve choices that you would like to study if, due to timetable constraints, we are unable to accommodate one or two of the four subjects listed above.

Student Signature: _____

Parent Signature: _____

Date: _____

For existing Jumeirah College students, please return your completed form to your form tutor by **Wednesday, 10 February 2021**. After this date first choice options cannot be guaranteed.



Year 11 GCSE Results 2020

	Entries	9	8	7	6	5	4	3	2	1	9%	9-7 %	9-4 %
Arabic	7	2	2	3	0	0	0	0	0	0	29%	100%	100%
Art	26	5	7	9	5	0	0	0	0	0	19%	81%	100%
Business Studies	53	12	17	7	11	5	1	0	0	0	23%	68%	100%
Design Tech	23	5	2	7	4	3	1	1	0	0	22%	61%	96%
Drama	21	3	6	6	4	2	0	0	0	0	14%	71%	100%
Economics	59	13	14	14	10	5	2	1	0	0	22%	69%	98%
English Language	158	20	37	42	37	13	9	0	0	0	13%	63%	100%
English Literature	158	23	31	48	37	14	5	0	0	0	15%	65%	100%
French	40	15	11	9	3	2	0	0	0	0	38%	88%	100%
History	55	10	17	14	6	6	2	0	0	0	18%	75%	100%
Maths	158	40	44	27	22	19	6	0	0	0	25%	70%	100%
Music	3	1	1	0	0	1	0	0	0	0	33%	67%	100%
PE	28	12	4	4	5	3	0	0	0	0	43%	71%	100%
Photography	1	0	0	1	0	0	0	0	0	0	0%	100%	100%
Psychology	50	11	13	22	3	1	0	0	0	0	22%	92%	100%
Science - Biology	60	32	14	10	4	0	0	0	0	0	53%	93%	100%
Science - Chemistry	60	32	16	10	2	0	0	0	0	0	53%	97%	100%
Science - Physics	60	26	23	10	1	0	0	0	0	0	43%	98%	100%
Science - Comb Science 1	98	23	24	23	18	9	1	0	0	0	23%	71%	100%
Science - Comb Science 2	98	12	24	22	28	9	3	0	0	0	12%	59%	100%
Spanish	37	4	9	11	8	4	1	0	0	0	11%	65%	100%
Further Maths	33	0	23	10	0	0	0	0	0	0	0%	100%	100%
Computer Science CAG	37	0	8	18	10	1	0	0	0	0	0%	70%	100%
Geography CAG	93	0	32	40	19	2	0	0	0	0	0%	77%	100%
ICT CAG	31	0	7	6	14	2	2	0	0	0	0%	42%	100%
German	1	1	0	0	0	0	0	0	0	0	100%	100%	100%
Totals	1448	302	386	373	251	101	33	2	0	0	20.9%	73.3%	99.9%

Jumeirah College
PO Box 74856
Dubai
United Arab Emirates
Tel: +971 4 395 5524
Fax: +971 4 395 4588
info_jcd@gemsedu.com
www.gemsjc.com



EDUCATION